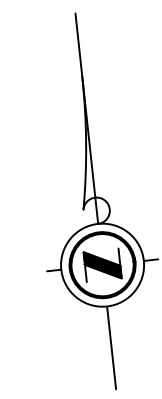


KNOWN AS QUEEN'S BUSH ROAD
(FORMERLY QUEEN STREET (R.C.P. 1148, FORMERLY WILLIAM STREET (R.C.P. 622))



PLAN OF TOPOGRAPHIC FEATURES
PART OF LOT 12
CONCESSION 1, EAST SECTION
IN THE
TOWNSHIP OF WELLESLEY
REGIONAL MUNICIPALITY OF WATERLOO

SCALE 1 : 200
5 0 5 10 metres

METRIC DISTANCES AND/OR COORDINATES SHOWN ON THIS PLAN ARE IN METRES AND CAN BE CONVERTED TO FEET BY DIVIDING BY 0.3048.

J.D.BARNES LIMITED
© COPYRIGHT 2022

LEGEND

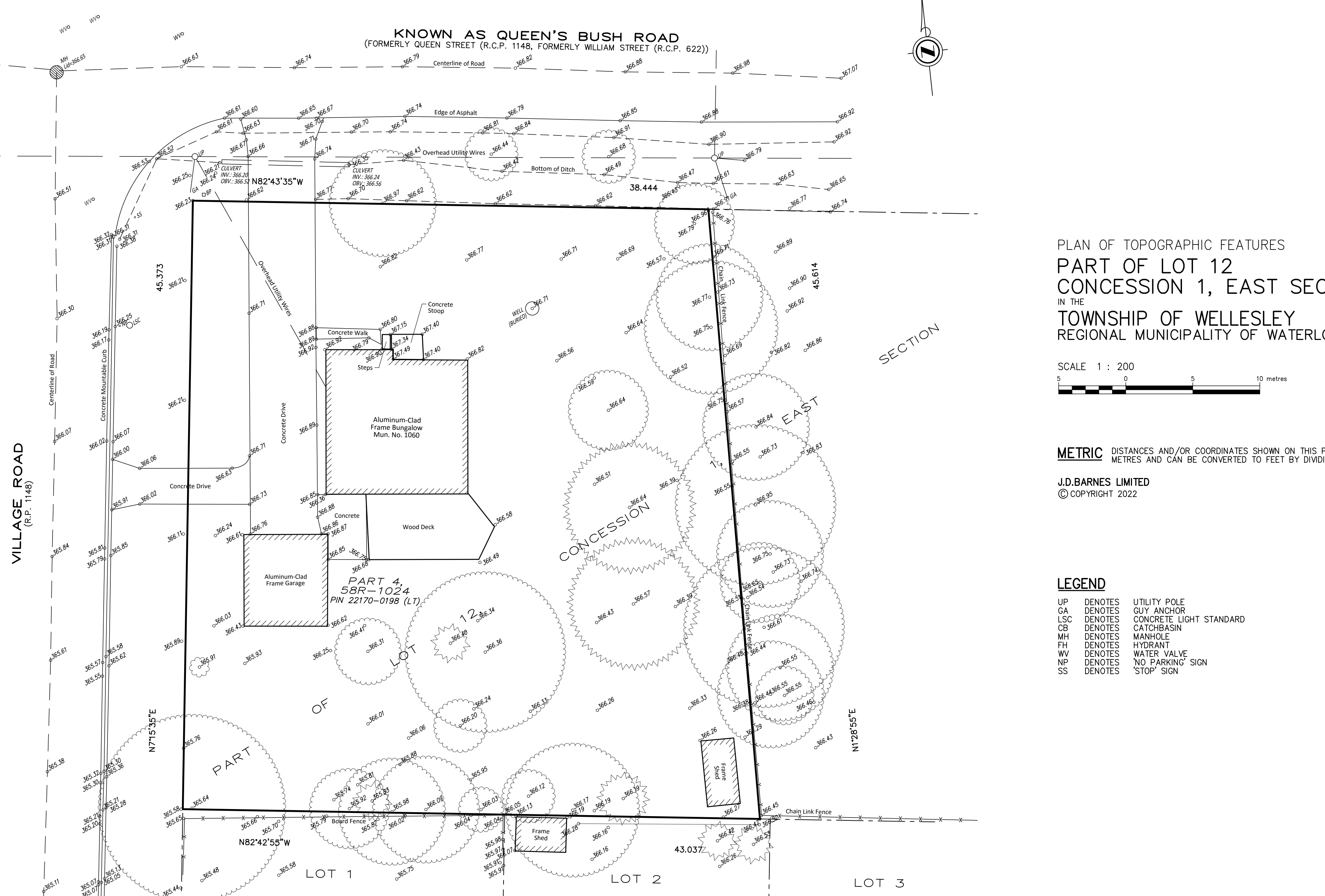
- UP DENOTES UTILITY POLE
- GA DENOTES GUY ANCHOR
- LSC DENOTES CONCRETE LIGHT STANDARD
- CB DENOTES CATCHBASIN
- MH DENOTES MANHOLE
- FH DENOTES HYDRANT
- WV DENOTES WATER VALVE
- NP DENOTES 'NO PARKING' SIGN
- SS DENOTES 'STOP' SIGN

VILLAGE ROAD
(R.P. 1148)

PART OF LOT 12

CONCESSION 1, EAST SECTION

PLAN 58M - 312



	J.D.BARNES LIMITED SURVEYING MAPPING GIS	
	LAND INFORMATION SPECIALISTS 4273 KING ST. E. #100, KITCHENER, ON, N2P 2E9 T: (519) 578-2220 F: (519) 650-5625 www.jdbarnes.com	
DRAWN BY: HwW	CHECKED BY: JPH	REFERENCE NO.: 22-40-676-00 DATED: 01/16/2023