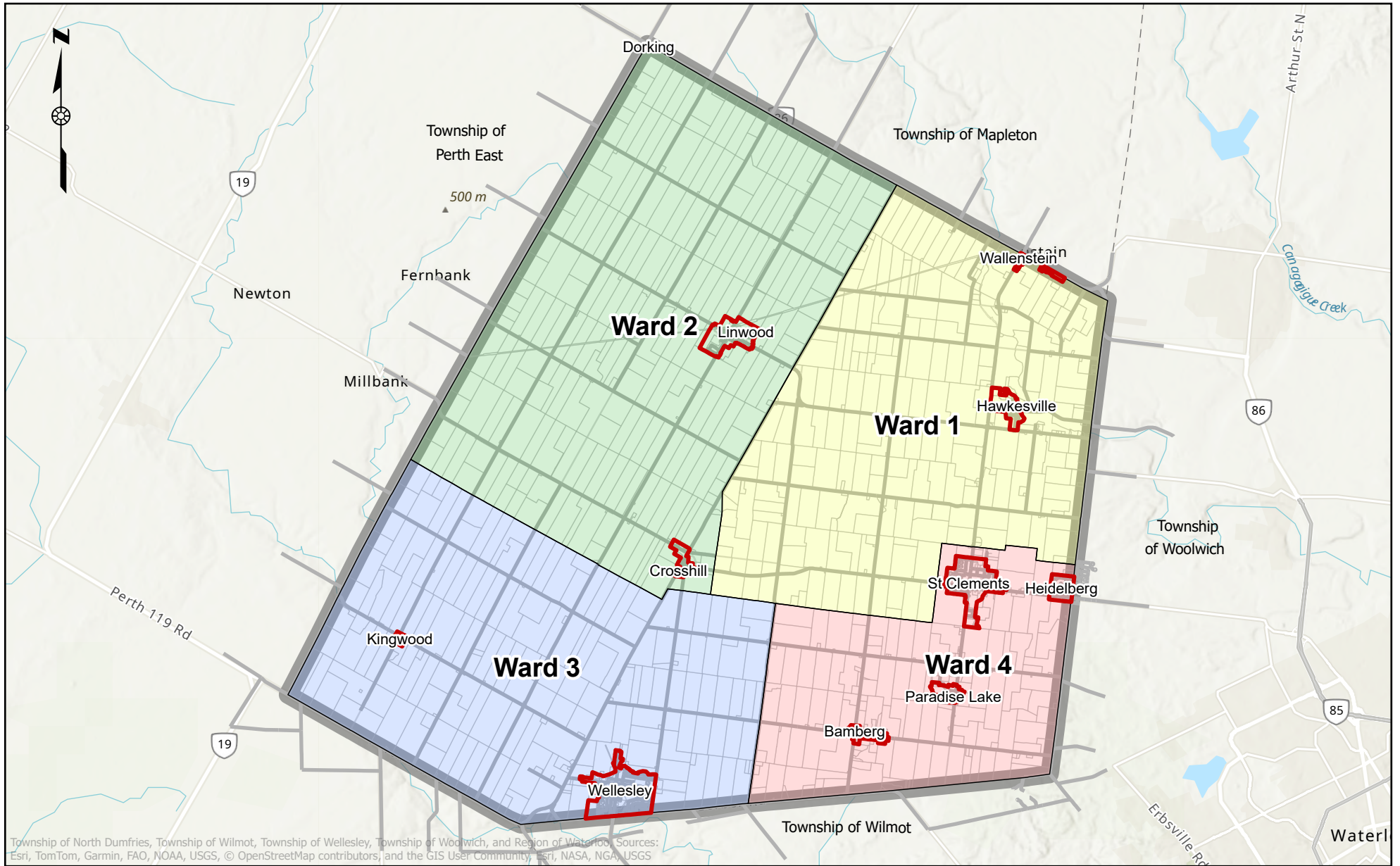
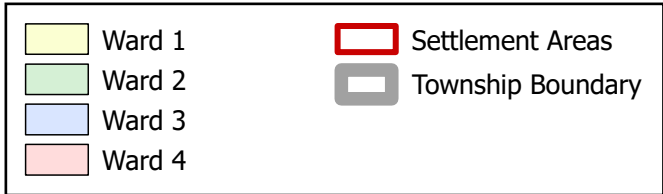


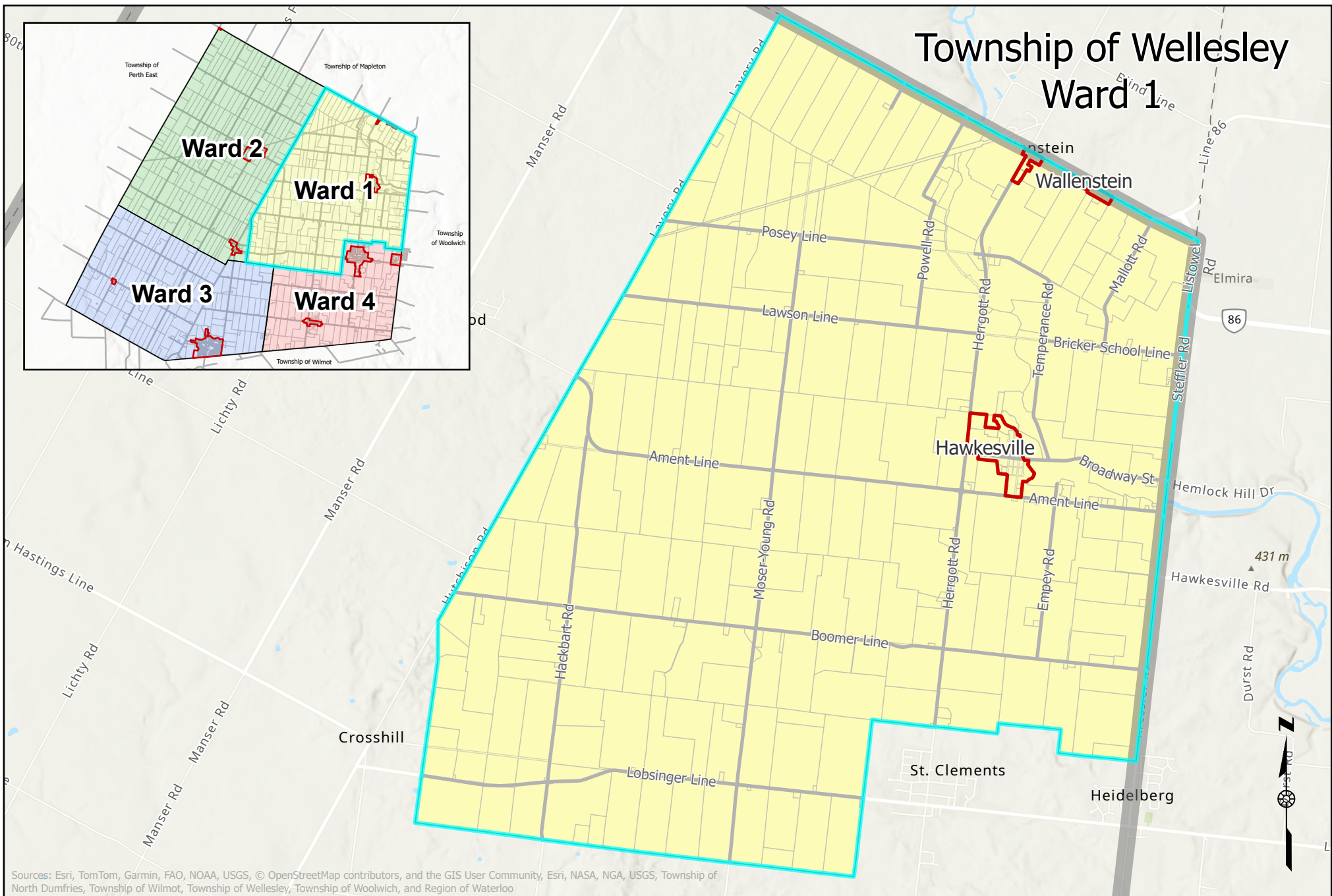
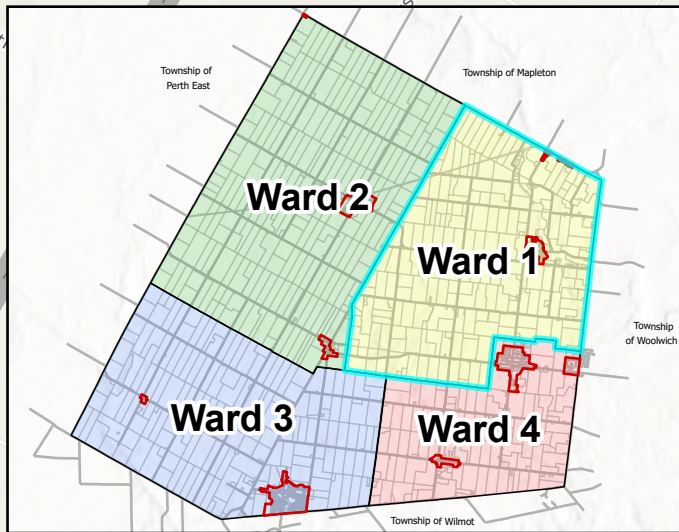
Township of Wellesley Ward Boundaries



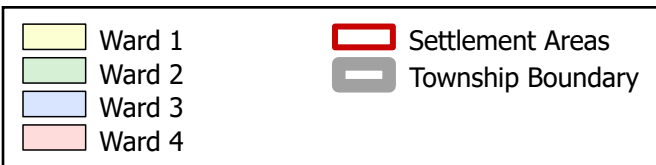
Township of North Dumfries, Township of Wilmot, Township of Wellesley, Township of Woolwich, and Region of Waterloo. Sources: Esri, TomTom, Garmin, FAO, NOAA, USGS, © OpenStreetMap contributors, and the GIS User Community, Esri, NASA, NGA, USGS



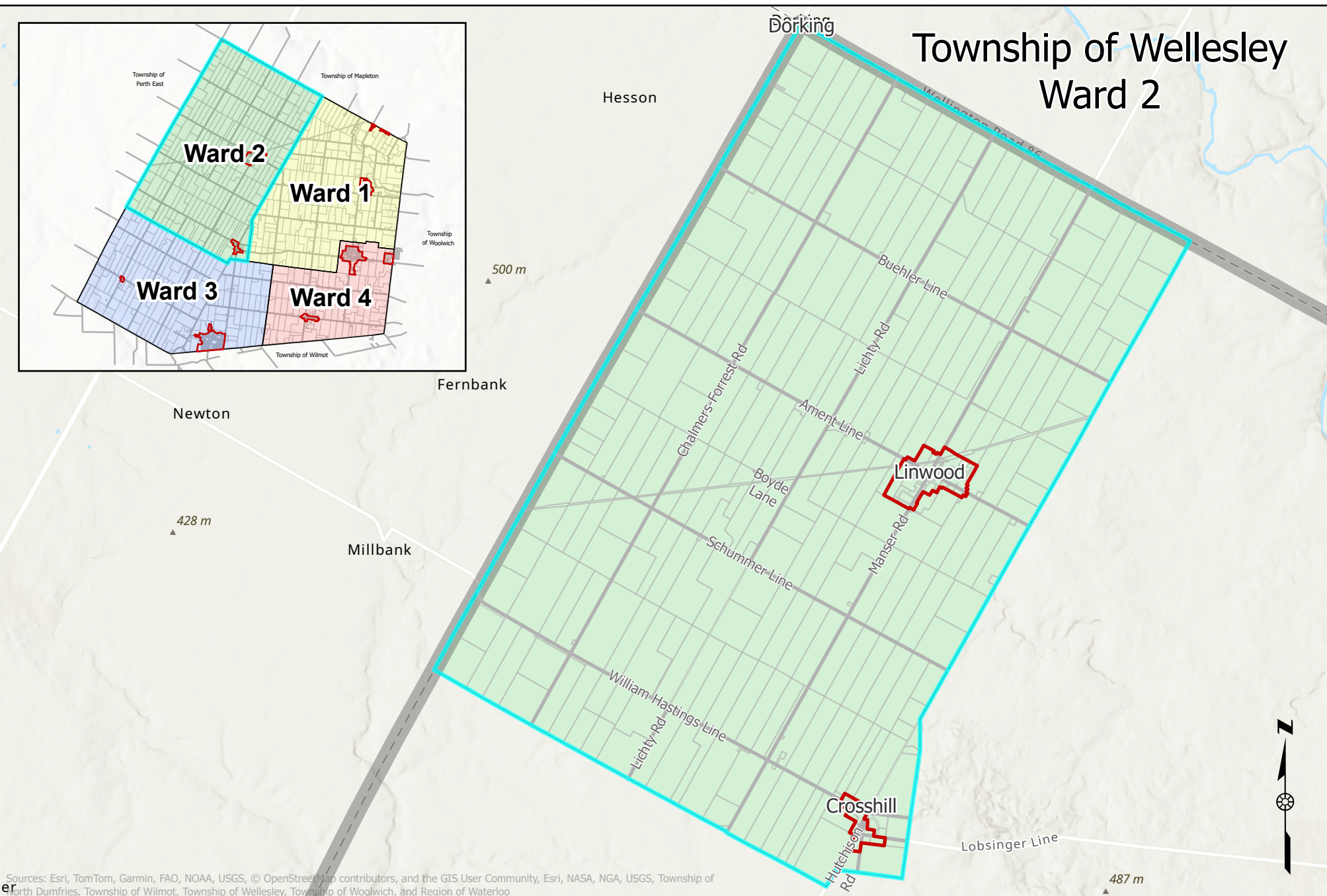
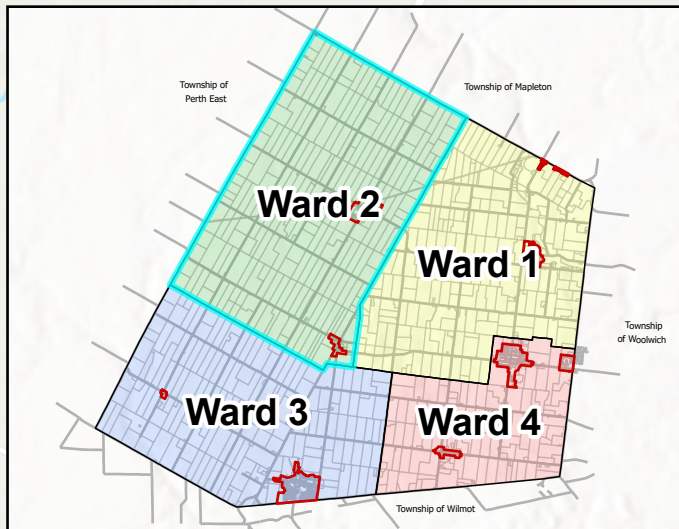
Township of Wellesley Ward 1



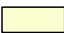

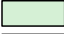



Sources: Esri, TomTom, Garmin, FAO, NOAA, USGS, © OpenStreetMap contributors, and the GIS User Community, Esri, NASA, NGA, USGS, Township of North Dumfries, Township of Wilmot, Township of Wellesley, Township of Woolwich, and Region of Waterloo

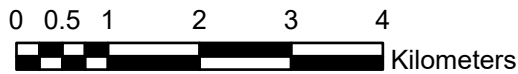


Township of Wellesley Ward 2

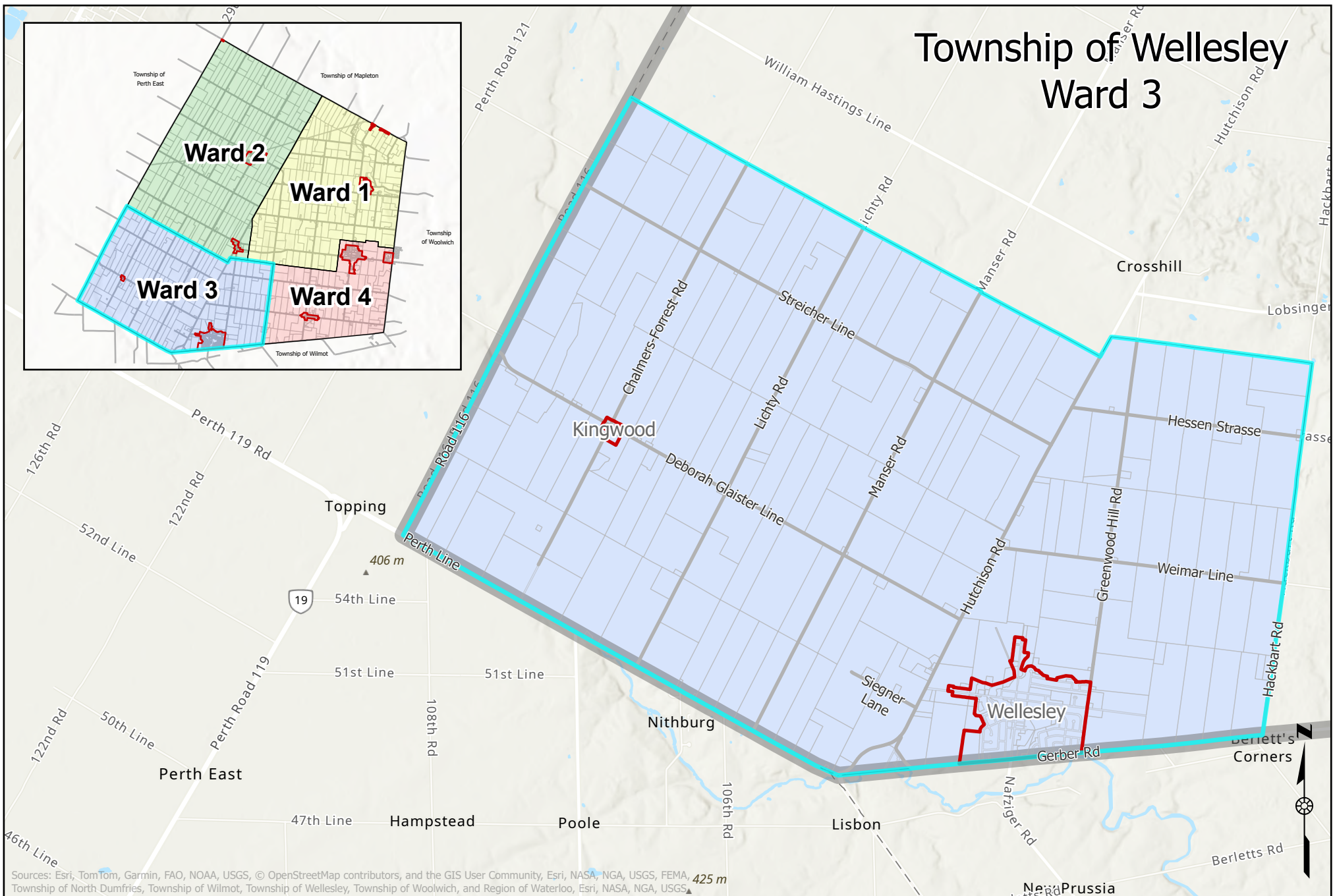
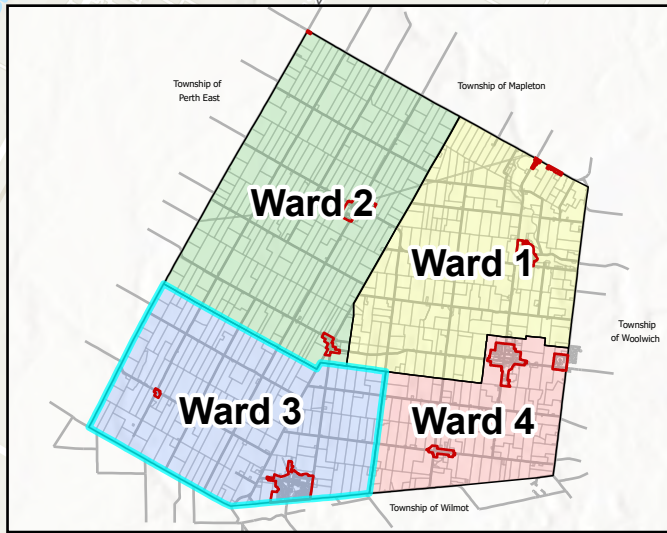


Sources: Esri, TomTom, Garmin, FAO, NOAA, USGS, © OpenStreetMap contributors, and the GIS User Community, Esri, NASA, NGA, USGS, Township of North Dumfries, Township of Wilmot, Township of Wellesley, Township of Woolwich, and Region of Waterloo

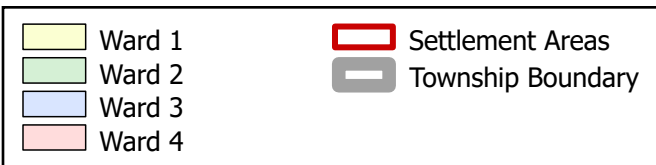
	Ward 1		Settlement Areas
	Ward 2		Township Boundary
	Ward 3		
	Ward 4		



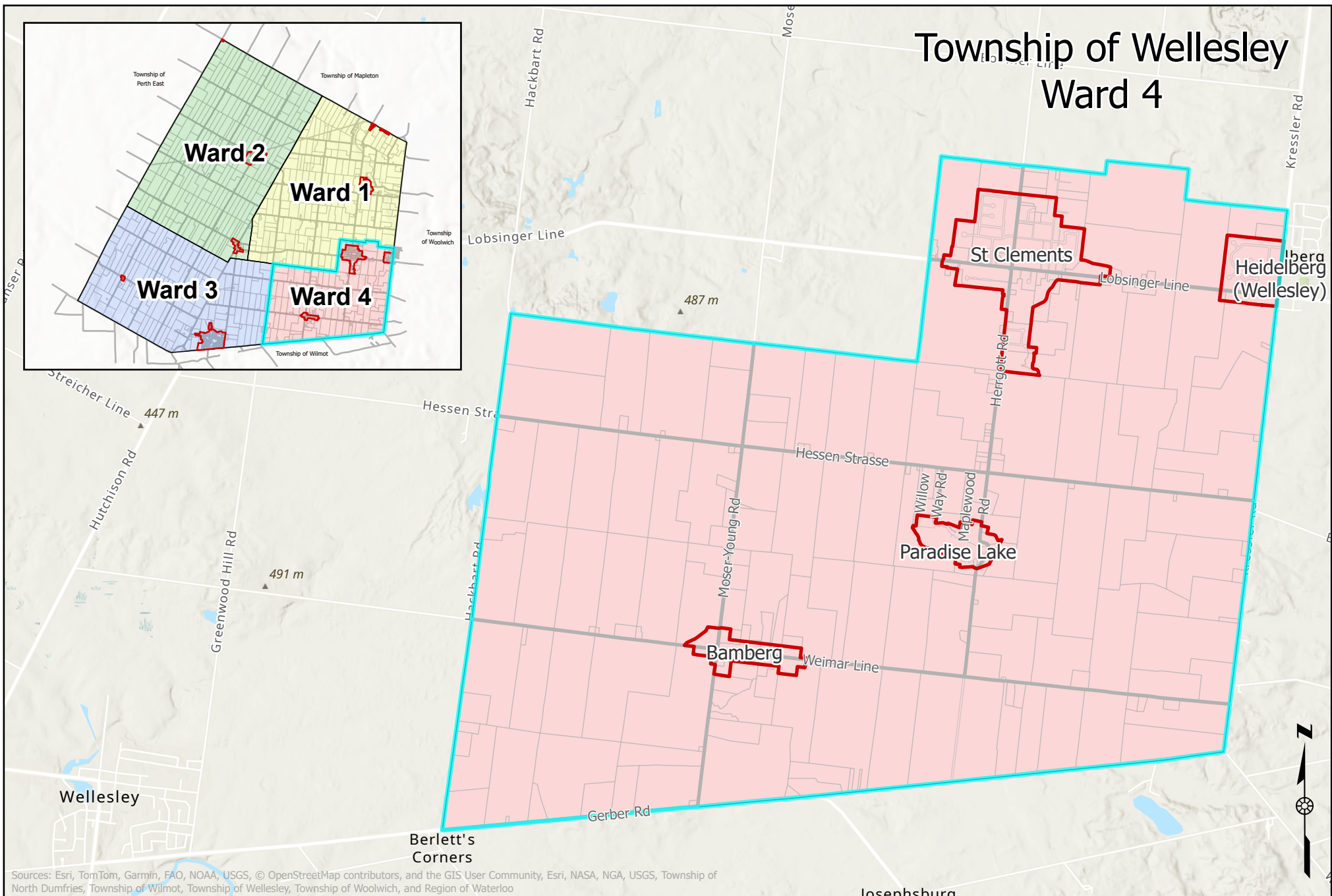
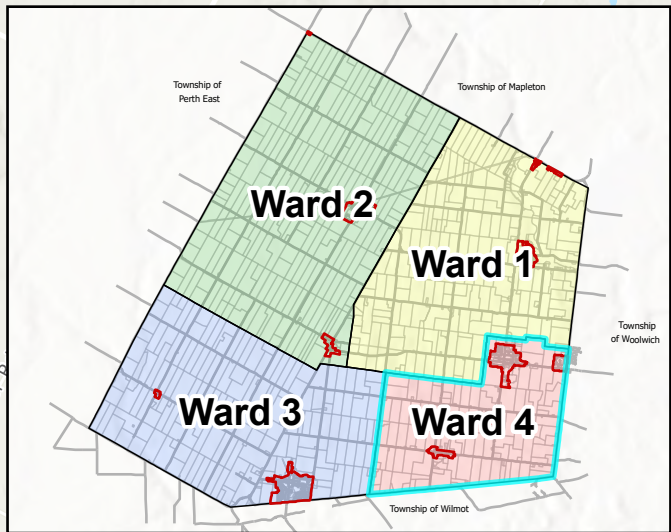
Township of Wellesley Ward 3



Sources: Esri, TomTom, Garmin, FAO, NOAA, USGS, © OpenStreetMap contributors, and the GIS User Community, Esri, NASA, NGA, USGS, FEMA, Township of North Dumfries, Township of Wilmot, Township of Wellesley, Township of Woolwich, and Region of Waterloo, Esri, NASA, NGA, USGS.



Township of Wellesley Ward 4



Sources: Esri, TomTom, Garmin, FAO, NOAA, USGS, © OpenStreetMap contributors, and the GIS User Community, Esri, NASA, NGA, USGS, Township of North Dumfries, Township of Wilmot, Township of Wellesley, Township of Woolwich, and Region of Waterloo

